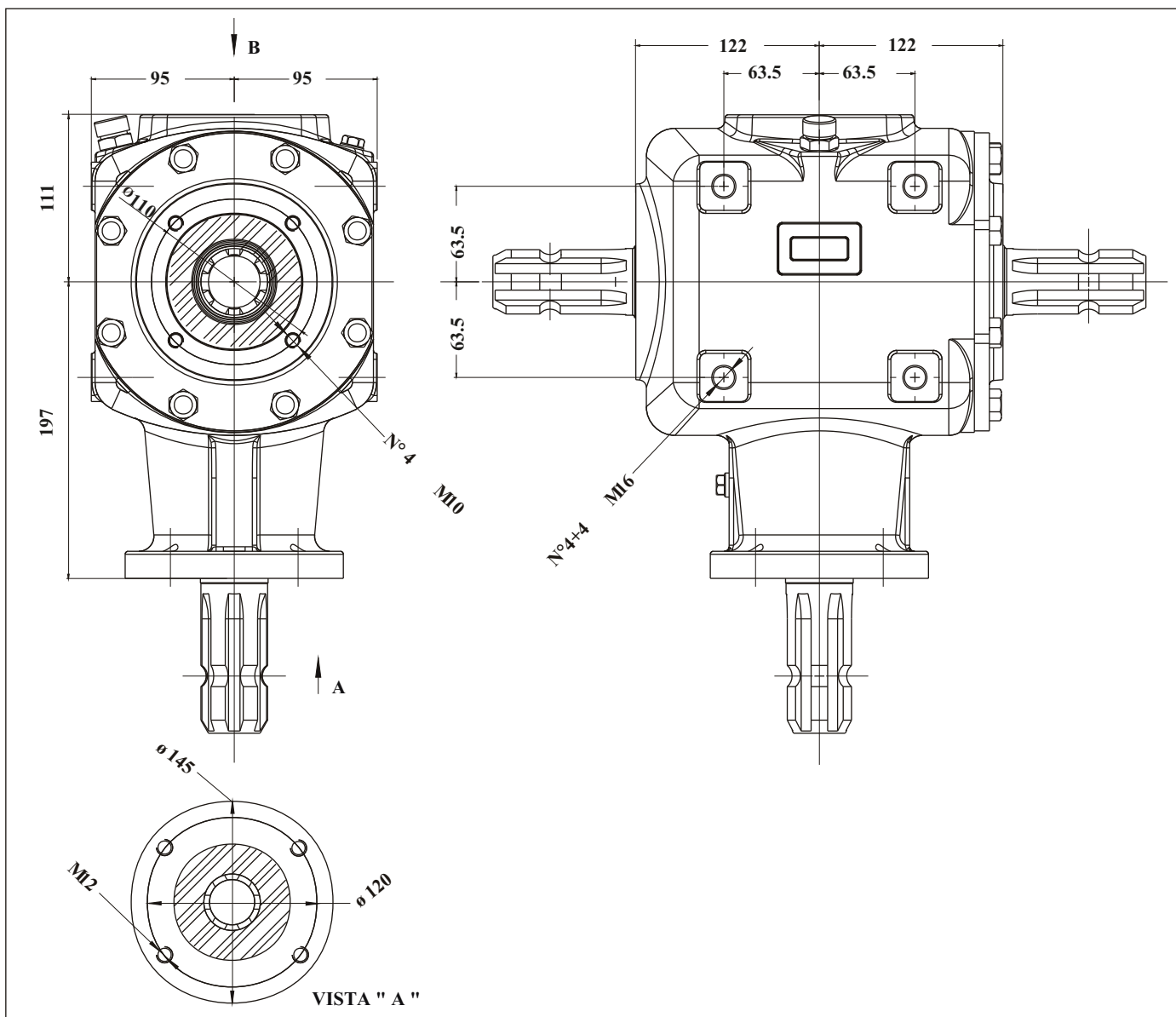


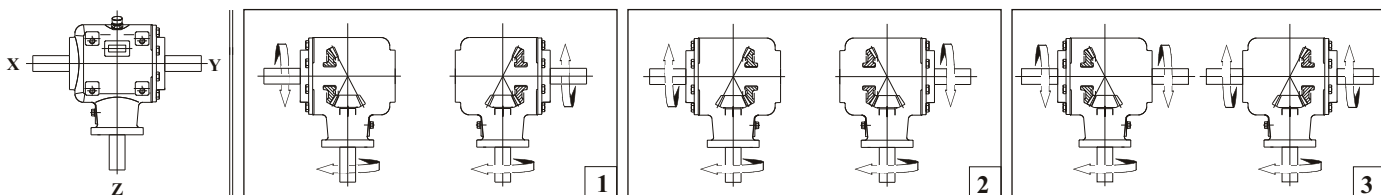


DIMENSIONI - DIMENSION - DIMENSIONS - BAUGROSSEN

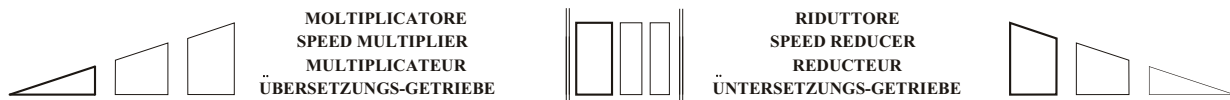


	MASSA MASS MASSE	Kg.31
	LUBRIFICANTE LUBRICANT LUBRIFIANT SCHMIERSTOFF	SAE 90 EP 2.4 Lt.

CONFIGURAZIONI - CONFIGURATION - CONFIGURATIONS - BAUFORMEN

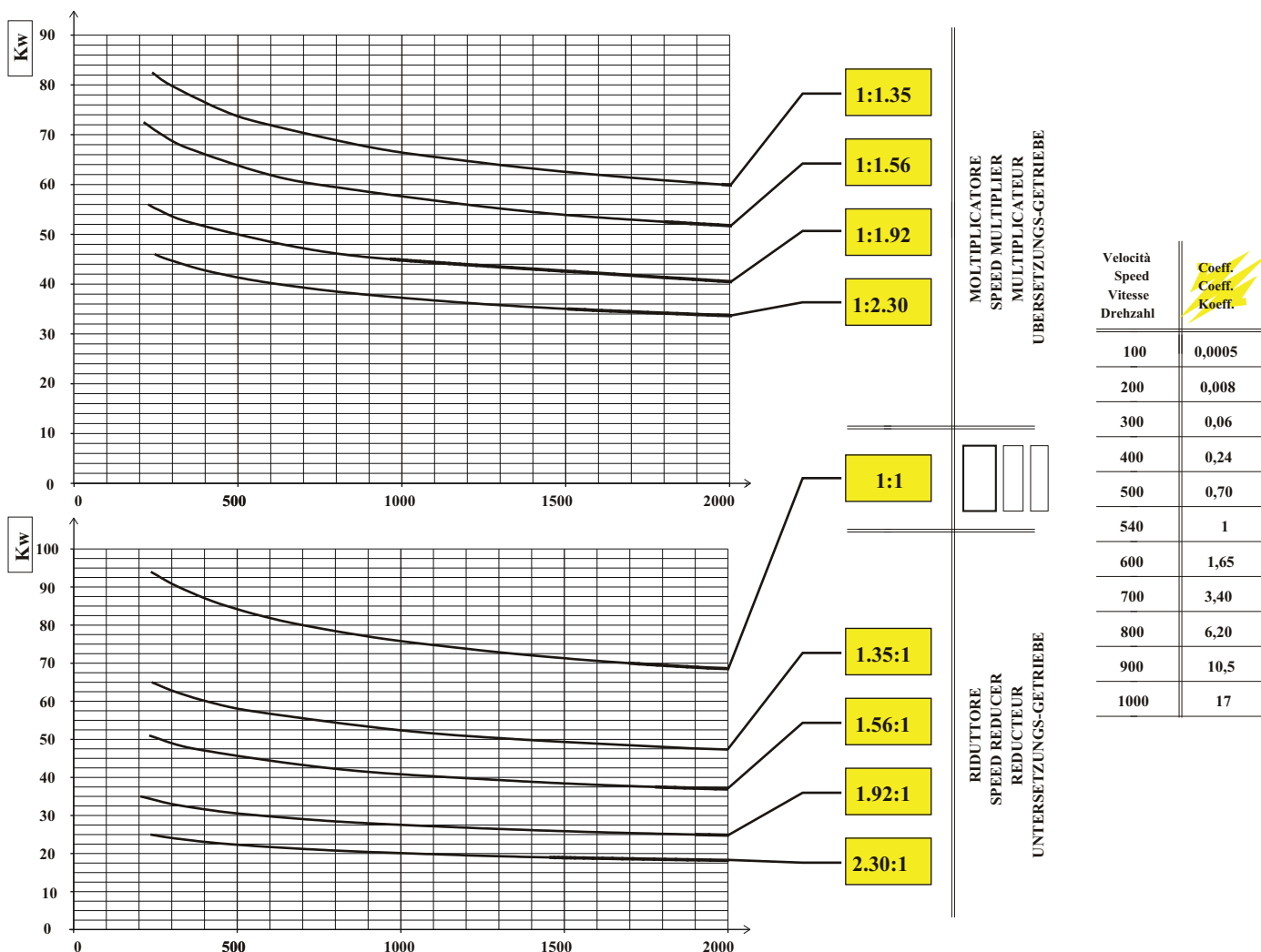


PRESTAZIONI - PERFORMANCES - LEISTUNGEN



Rapporto Ratio Rapport Übers.-verh.	1:3.08		1:2.30		1:1.92		1:1.56		1:1.35		1:1	1.35:1		1.56:1		1.92:1		2.30:1		3.08:1		
Giri - r.p.m. U/min	540	1000	540	1000	540	1000	540	1000	540	1000	540	1000	540	1000	540	1000	540	1000	540	1000	540	1000
Kw	-	-	45	67	52	78	68	102	80	120	90	135	62	95	47	73	32	50	24	37	-	-
HP	-	-	61	91	70	106	92	138	109	163	122	183	84	129	64	99	44	68	33	50	-	-
DaNm	-	-	81	65	93	76	122	99	144	116	162	131	111	92	85	71	58	49	44	36	-	-

DURATA STIMATA A 540 giri/min - ESTIMATED LIFE AT 540 rpm - DUREE DE VIE ESTIMEE A 540 Tours/m - LEBENSDAUER ca. 540 U/min



ALBERI - SHAFTS - ARBRES - WELLEN

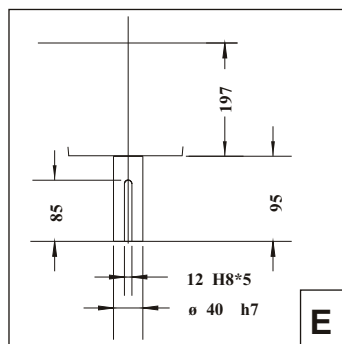
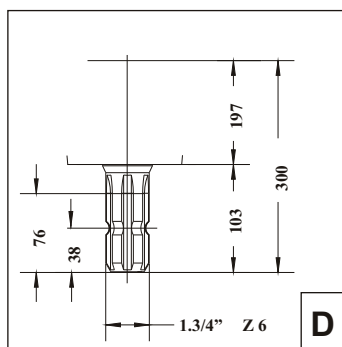
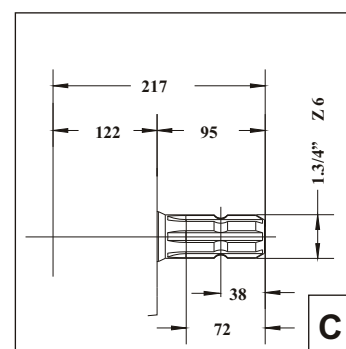
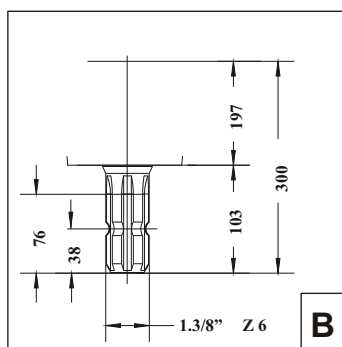
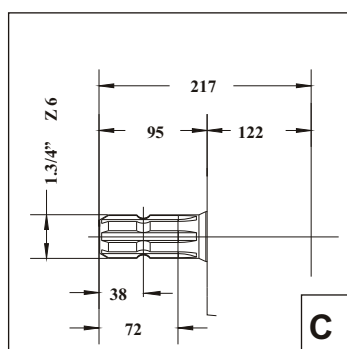
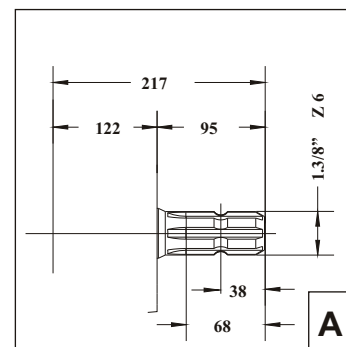
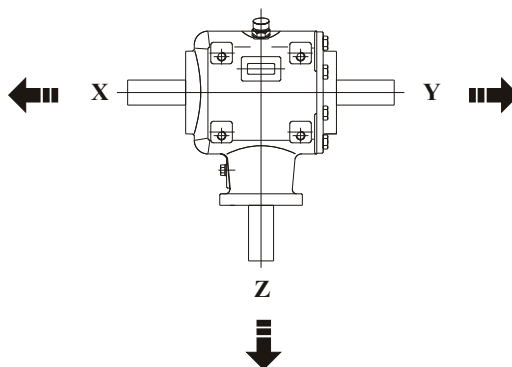
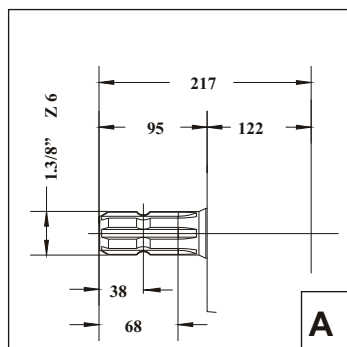
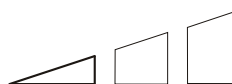


TABELLA MULTIPLICATORI STANDARD - STANDARD SPEED MULTIPLIERS TABLE
TABLEAU DES MULTIPLICATEURS STANDARDS - STANDARD UBERSTZUNG-GETRIEBE TABELLE

CODICE PART NO. REFER BEST. NR.	RAPPORTO RATIO RAPPORT UBERS.-VERH.	CONFIGURAZIONE VERSION CONFIGURATION BAUFORMEN			INGRESSO INPUT ENTREE EINGANG	
		X	Y	Z		
R1600552	1:1.35	C	C	D	3	X - Y
R1600553	1:1.35		C	D	1	Y
R1600555	1:1.35		C	D	2	Y
R1600556	1:1.35	A	A	B	3	X - Y
R1600557	1:1.35		A	B	1	Y
R1600559	1:1.35		A	B	2	Y
R1600560	1:1.35	C	C	B	3	X - Y
R1600561	1:1.35		C	B	1	Y
R1600563	1:1.35		C	B	2	Y
R1600564	1:1.56	C	C	D	3	X - Y
R1600565	1:1.56		C	D	1	Y
R1600567	1:1.56		C	D	2	Y
R1600568	1:1.56	A	A	B	3	X - Y
R1600569	1:1.56		A	B	1	Y
R1600571	1:1.56		A	B	2	Y
R1600572	1:1.56	C	C	B	3	X - Y
R1600573	1:1.56		C	B	1	Y
R1600575	1:1.56		C	B	2	Y
R1600576	1:1.92	C	C	D	3	X - Y
R1600577	1:1.92		C	D	1	Y
R1600579	1:1.92		C	D	2	Y
R1600580	1:1.92	A	A	B	3	X - Y
R1600581	1:1.92		A	B	1	Y
R1600583	1:1.92		A	B	2	Y
R1600584	1:1.92	C	C	B	3	X - Y
R1600585	1:1.92		C	B	1	Y
R1600587	1:1.92		C	B	2	Y
R1600588	1:2.31	C	C	D	3	X - Y
R1600589	1:2.31		C	D	1	Y
R1600591	1:2.31		C	D	2	Y
R1600592	1:2.31	A	A	B	3	X - Y
R1600593	1:2.31		A	B	1	Y
R1600595	1:2.31		A	B	2	Y
R1600596	1:2.31	C	C	B	3	X - Y
R1600597	1:2.31		C	B	1	Y
R1600599	1:2.31		C	B	2	Y



MOLTIPLICATORE
SPEED MULTIPLIER
MULTIPLICATEUR
UBERSETZUNGS-GETRIEBE

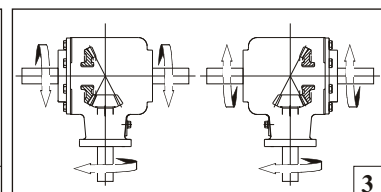
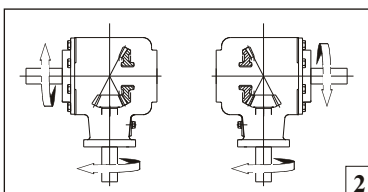
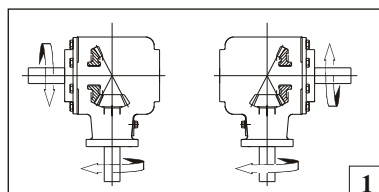
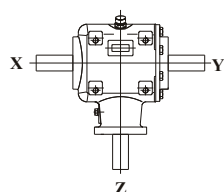
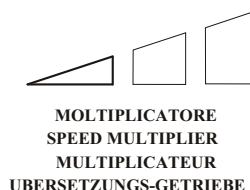


TABELLA MOLTIPLICATORI STANDARD - STANDARD SPEED MULTIPLIERS TABLE
TABLEAU DES MULTIPLICATEURS STANDARDS - STANDARD UBERSTZUNG-GETRIEBE TABELLE

RUOTA LIBERA
OVERRUNNING CLUTCH
ROUE LIBRE
FREILAUFKUPPLUNG



CODICE PART NO. REFER BEST. NR.	RAPPORTO RATIO RAPPORT UBERS.-VERH.	CONFIGURAZIONE VERSION CONFIGURATION BAUFORMEN			INGRESSO INPUT ENTREE EINGANG
		X	Y	Z	
R1600605	1:1.92	C	C	E	3 ▲ X - Y
R1600606	1:1.92		C	E	1 Y
R1600607	1:1.92	C	C	E	3 ● X - Y
R1600608	1:1.92		C	E	2 Y
R1600610	1:1.92	A	A	E	3 ▲ X - Y
R1600611	1:1.92		A	E	1 Y
R1600612	1:1.92	A	A	E	3 ● X - Y
R1600613	1:1.92		A	E	2 Y
R1600615	1:1.92	C	C	D	3 ▲ X - Y
R1600616	1:1.92		C	D	1 Y
R1600617	1:1.92	C	C	D	3 ● X - Y
R1600618	1:1.92		C	D	2 Y
R1600620	1:1.92	A	A	B	3 ▲ X - Y
R1600621	1:1.92		A	B	1 Y
R1600622	1:1.92	A	A	B	3 ● X - Y
R1600623	1:1.92		A	B	2 Y
R1600625	1:1.92	C	C	B	3 ▲ X - Y
R1600626	1:1.92		C	B	1 Y
R1600627	1:1.92	C	C	B	3 ● X - Y
R1600628	1:1.92		C	B	2 Y
R1600630	1:2.31	C	C	E	3 ▲ X - Y
R1600631	1:2.31		C	E	1 Y
R1600632	1:2.31	C	C	E	3 ● X - Y
R1600633	1:2.31		C	E	2 Y
R1600635	1:2.31	A	A	E	3 ▲ X - Y
R1600636	1:2.31		A	E	1 Y
R1600637	1:2.31	A	A	E	3 ● X - Y
R1600638	1:2.31		A	E	2 Y
R1600640	1:2.31	C	C	D	3 ▲ X - Y
R1600641	1:2.31		C	D	1 Y
R1600642	1:2.31	C	C	D	3 ● X - Y
R1600643	1:2.31		C	D	2 Y
R1600645	1:2.31	A	A	B	3 ▲ X - Y
R1600646	1:2.31		A	B	1 Y
R1600647	1:2.31	A	A	B	3 ● X - Y
R1600648	1:2.31		A	B	2 Y
R1600650	1:2.31	C	C	B	3 ▲ X - Y
R1600651	1:2.31		C	B	1 Y
R1600652	1:2.31	C	C	B	3 ● X - Y
R1600653	1:2.31		C	B	2 Y

Alberi con senso di rotazione concorde
Same shafts rotation
● Arbres avec même sens de rotation
Wellen mit gleicher Drehrichtung

Alberi con senso di rotazione opposto
Opposite shafts rotation
▲ Arbres avec sens de rotation opposés
Wellen mit gegensätzlicher Drehrichtung

TABELLA RINVII ANGOLARI STANDARD - STANDARD 90° BEVEL GEAR UNIT TABLE
TABLEAU DES RENVOI D'ANGLE STANDARDS - STANDARD WINKELGETRIEBE TABELLE



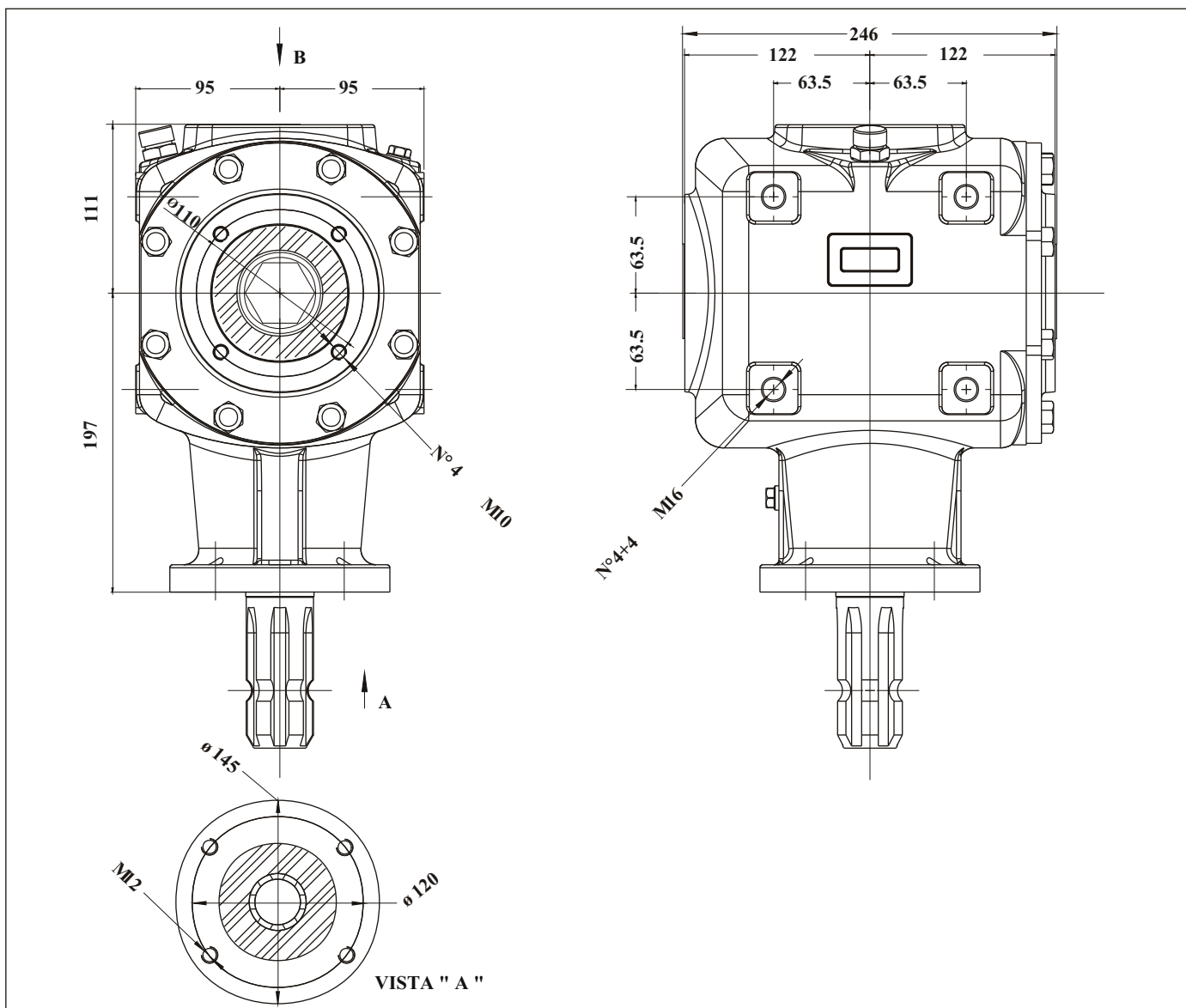
CODICE PART NO. REFER BEST. NR.	RAPPORTO RATIO RAPPORT UBERS.-VERH.	CONFIGURAZIONE VERSION CONFIGURATION BAUFORMEN			INGRESSO INPUT ENTREE EINGANG	
		X	Y	Z		
R1600540	1:1	C	C	D	3	X - Y - Z
R1600541	1:1		C	D	1	Y
R1600543	1:1		C	D	2	Y
R1600544	1:1	A	A	B	3	X - Y - Z
R1600545	1:1		A	B	1	Y
R1600547	1:1		A	B	2	Y
R1600548	1:1	C	C	B	3	X - Y - Z
R1600549	1:1		C	B	1	Y
R1600551	1:1		C	B	2	Y



TABELLA RIDUTTORI STANDARD - STANDARD SPEED REDUCERS TABLE
TABLEAU DES REDUCTEURS STANDARDS - STANDARD UBERSTZUNG-GETRIEBE TABELLE

CODICE PART NO. REFER BEST. NR.	RAPPORTO RATIO RAPPORT UBERS.-VERH.	CONFIGURAZIONE VERSION CONFIGURATION BAUFORMEN			INGRESSO INPUT ENTREE EINGANG	
		X	Y	Z		
R1600552	1.35:1	C	C	D	3	Z
R1600553	1.35:1		C	D	1	Z
R1600555	1.35:1		C	D	2	Z
R1600556	1.35:1	A	A	B	3	Z
R1600557	1.35:1		A	B	1	Z
R1600559	1.35:1		A	B	2	Z
R1600560	1.35:1	C	C	B	3	Z
R1600561	1.35:1		C	B	1	Z
R1600563	1.35:1		C	B	2	Z
R1600564	1.56:1	C	C	D	3	Z
R1600565	1.56:1		C	D	1	Z
R1600567	1.56:1		C	D	2	Z
R1600568	1.56:1	A	A	B	3	Z
R1600569	1.56:1		A	B	1	Z
R1600571	1.56:1		A	B	2	Z
R1600572	1.56:1	C	C	B	3	Z
R1600573	1.56:1		C	B	1	Z
R1600575	1.56:1		C	B	2	Z
R1600576	1.92:1	C	C	D	3	Z
R1600577	1.92:1		C	D	1	Z
R1600579	1.92:1		C	D	2	Z
R1600580	1.92:1	A	A	B	3	Z
R1600581	1.92:1		A	B	1	Z
R1600583	1.92:1		A	B	2	Z
R1600584	1.92:1	C	C	B	3	Z
R1600585	1.92:1		C	B	1	Z
R1600587	1.92:1		C	B	2	Z
R1600588	2.31:1	C	C	D	3	Z
R1600589	2.31:1		C	D	1	Z
R1600591	2.31:1		C	D	2	Z
R1600592	2.31:1	A	A	B	3	Z
R1600593	2.31:1		A	B	1	Z
R1600595	2.31:1		A	B	2	Z
R1600596	2.31:1	C	C	B	3	Z
R1600597	2.31:1		C	B	1	Z
R1600599	2.31:1		C	B	2	Z

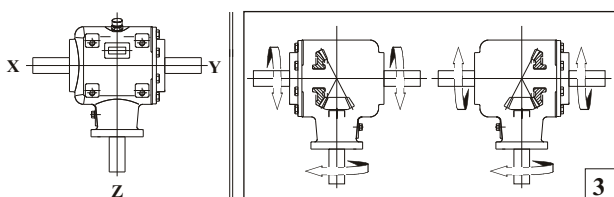


DIMENSIONI - DIMENSION - DIMENSIONS - BAUGROSSEN

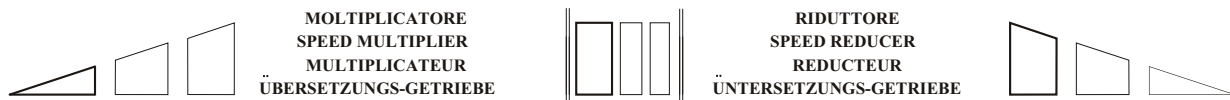


	MASSA MASS MASSE	Kg.31
	LUBRIFICANTE LUBRICANT LUBRIFIANT SCHMIERSTOFF	SAE 90 EP 2.4 Lt.

CONFIGURAZIONI - CONFIGURATION - CONFIGURATIONS - BAUFORMEN

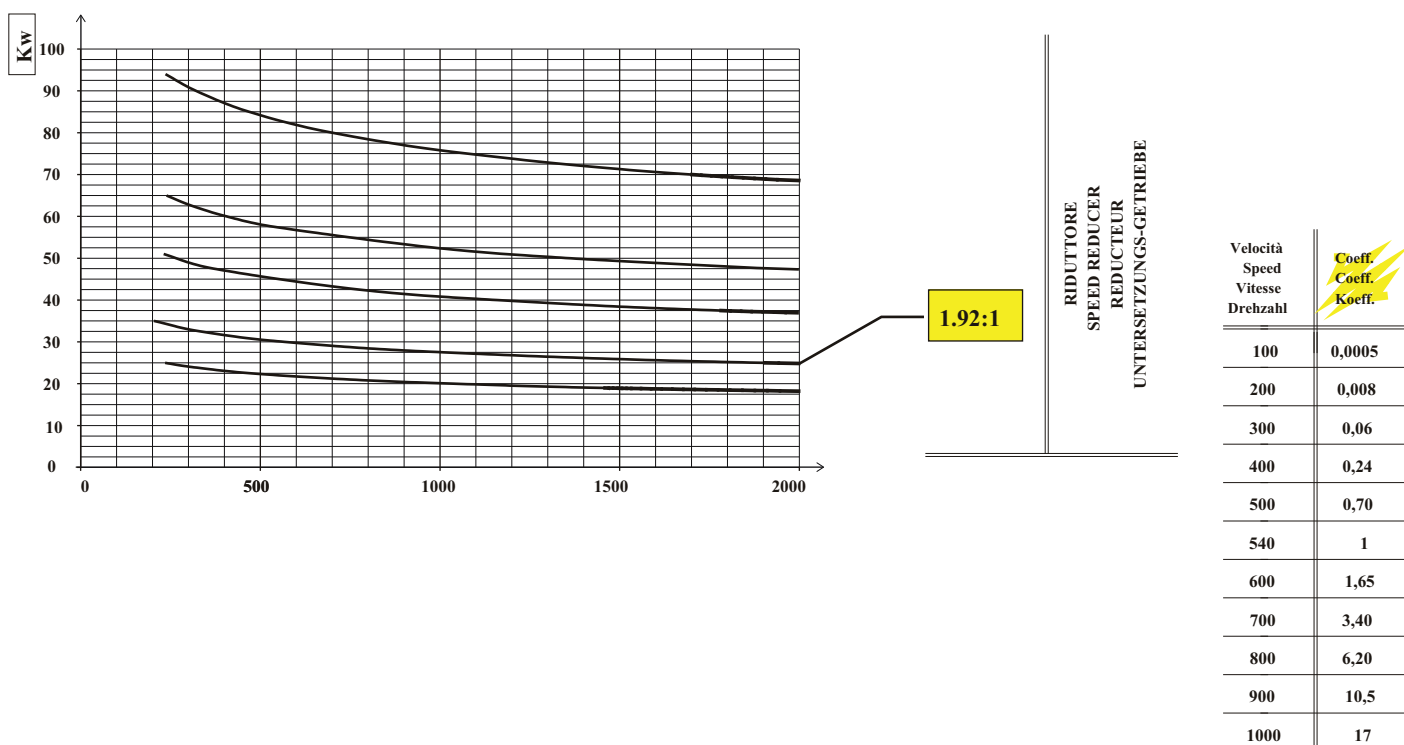


PRESTAZIONI - PERFORMANCES - LEISTUNGEN

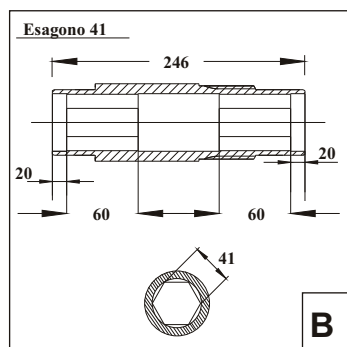


Rapporto Ratio Rapport Übers.-verh.	1:3.08		1:2.30		1:1.92		1:1.56		1:1.35		1:1	1.35:1		1.56:1		1.92:1		2.30:1		3.08:1		
Giri - r.p.m. U/min	540	1000	540	1000	540	1000	540	1000	540	1000	540	1000	540	1000	540	1000	540	1000	540	1000	540	1000
Kw	-	-	-	-	-	-	-	-	-	-	-	-	-	-	-	-	32	50	-	-	-	-
HP	-	-	-	-	-	-	-	-	-	-	-	-	-	-	-	-	44	68	-	-	-	-
DaNm	-	-	-	-	-	-	-	-	-	-	-	-	-	-	-	-	58	49	-	-	-	-

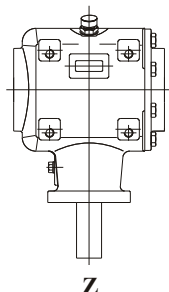
DURATA STIMATA A 540 giri/min - ESTIMATED LIFE AT 540 rpm - DUREE DE VIE ESTIMEE A 540 Tours/m - LEBENSDAUER ca. 540 U/min



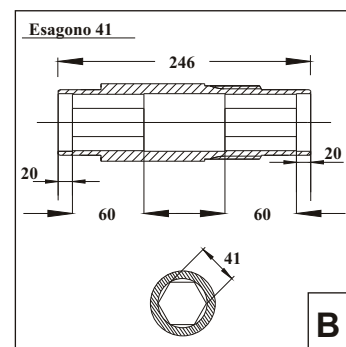
ALBERI - SHAFTS - ARBRES - WELLEN



← X



Y →



Z

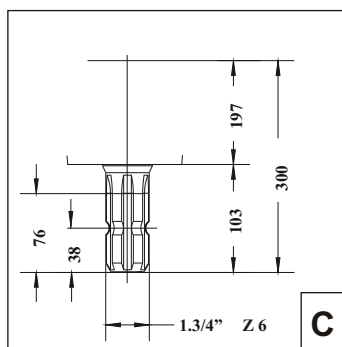
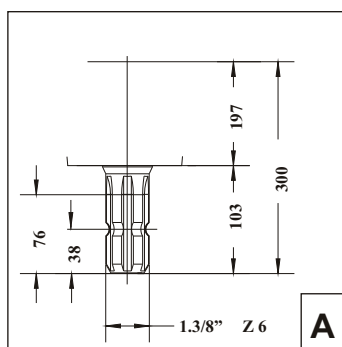


TABELLA MULTIPLICATORI STANDARD - STANDARD SPEED MULTIPLIERS TABLE
TABLEAU DES MULTIPLICATEURS STANDARDS - STANDARD UBERSTZUNG-GETRIEBE TABELLE



MULTIPLICATORE
SPEED MULTIPLIER
MULTIPLICATEUR
UBERSETZUNGS-GETRIEBE

CODICE PART NO. REFER BEST. NR.	RAPPORTO RATIO RAPPORT UBERS.-VERH.	CONFIGURAZIONE VERSION CONFIGURATION BAUFORMEN			INGRESSO INPUT ENTREE EINGANG	
		X	Y	Z		
R1650600	1.92:1	B	B	A	3	Z
R1600601	1.92:1	B	B	C	3	Z

